



BEK Systemtechnik

Company Profile

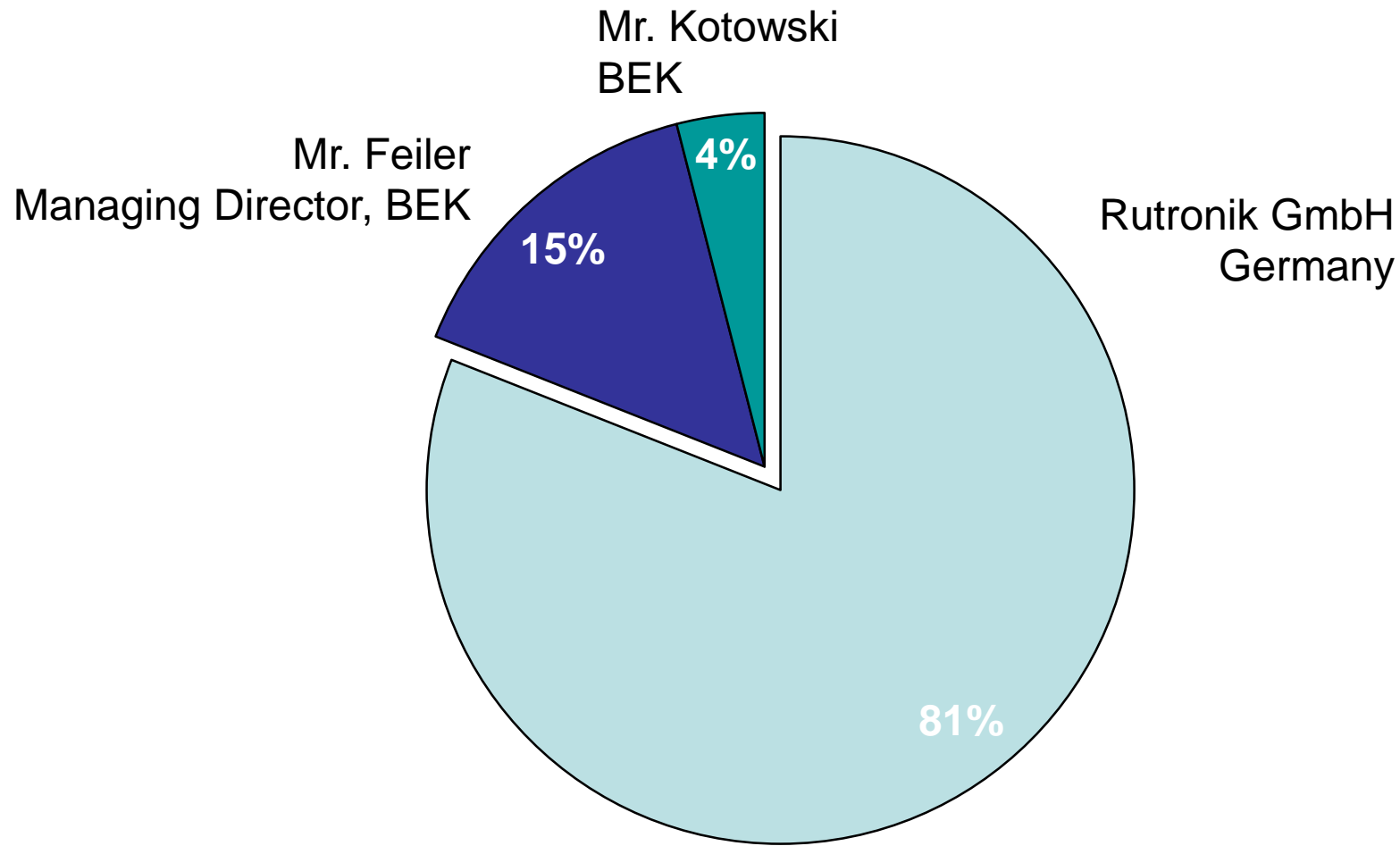
March 2020

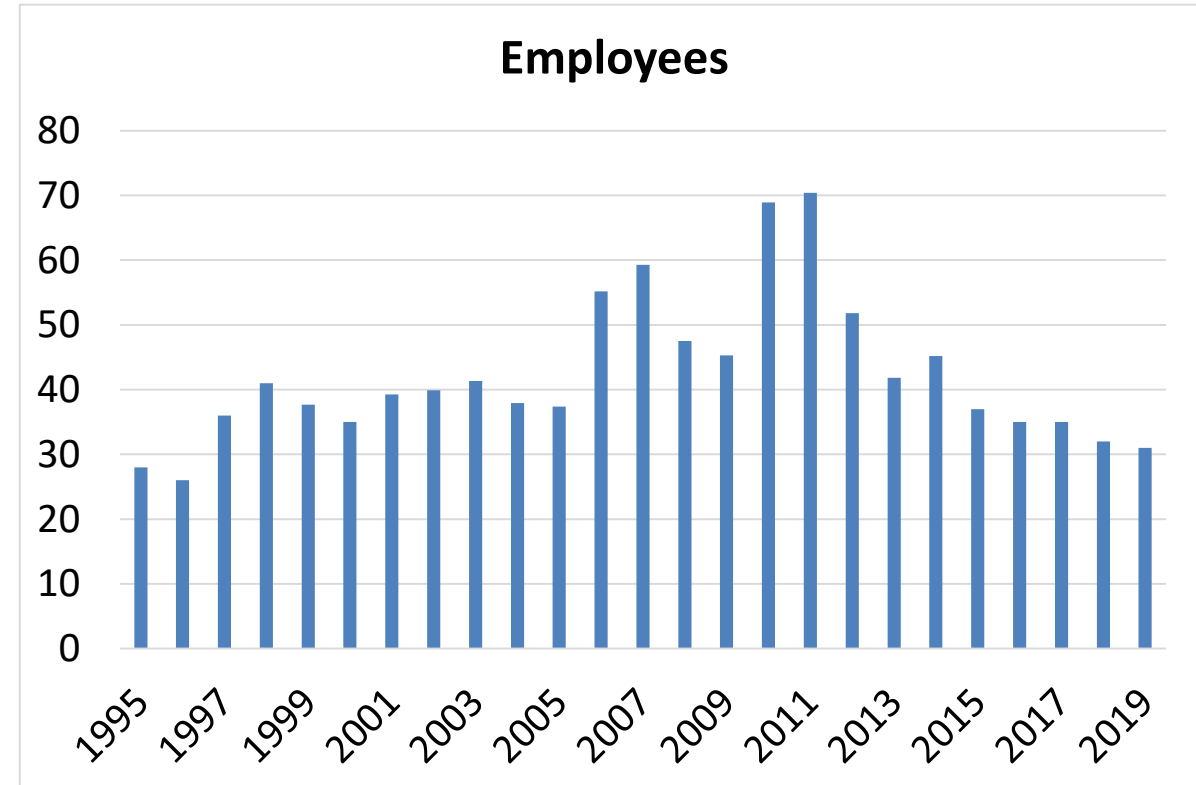
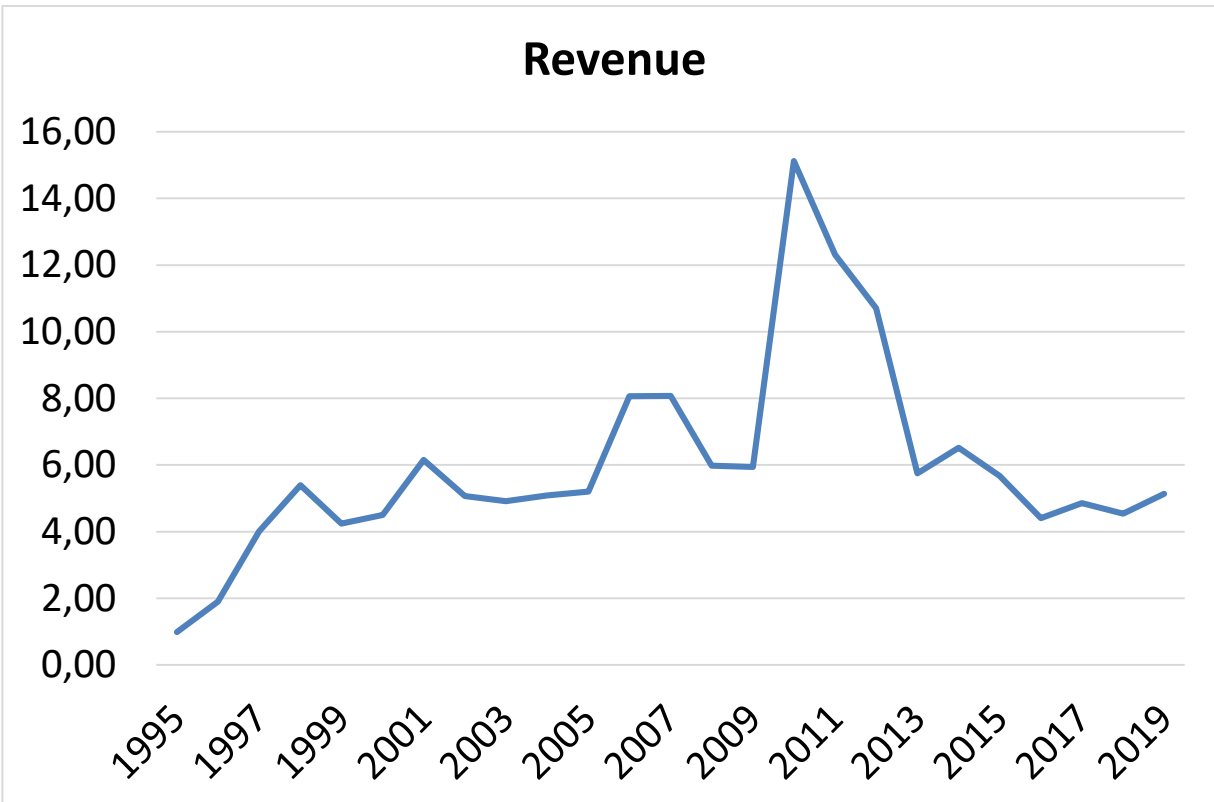
- 1983 Starting with Electronic Manufacturing at VEB Elektroprojekt Berlin
- 1995 **Foundation** of BEK Systemtechnik
- 1997 Duplication Manufacturing Area
- bis 2003 New N₂ soldering unit for wave soldering process
New Reflow-Soldering Machine and SMD- Assembly Units
- 2005/06 New Business-Unit for Inter Circuits Programming Service for
Microcontrollers, Memories, etc.
- 2007 Set-Up Incircuit- and Functiontest-System, Reinhardt ATS-KMFT-670M-2
- 2008 Upgrade SMD- Reflow-System 2009
- 2010 New acquisition of a N₂ wave soldering machine fully encapsulated
- 2018/19 Installation of second climate chamber, Feutron TPK200
- today Shareholders' resolution for the strategic reorientation of BEK
Systemtechnik (new building and investment in machinery)

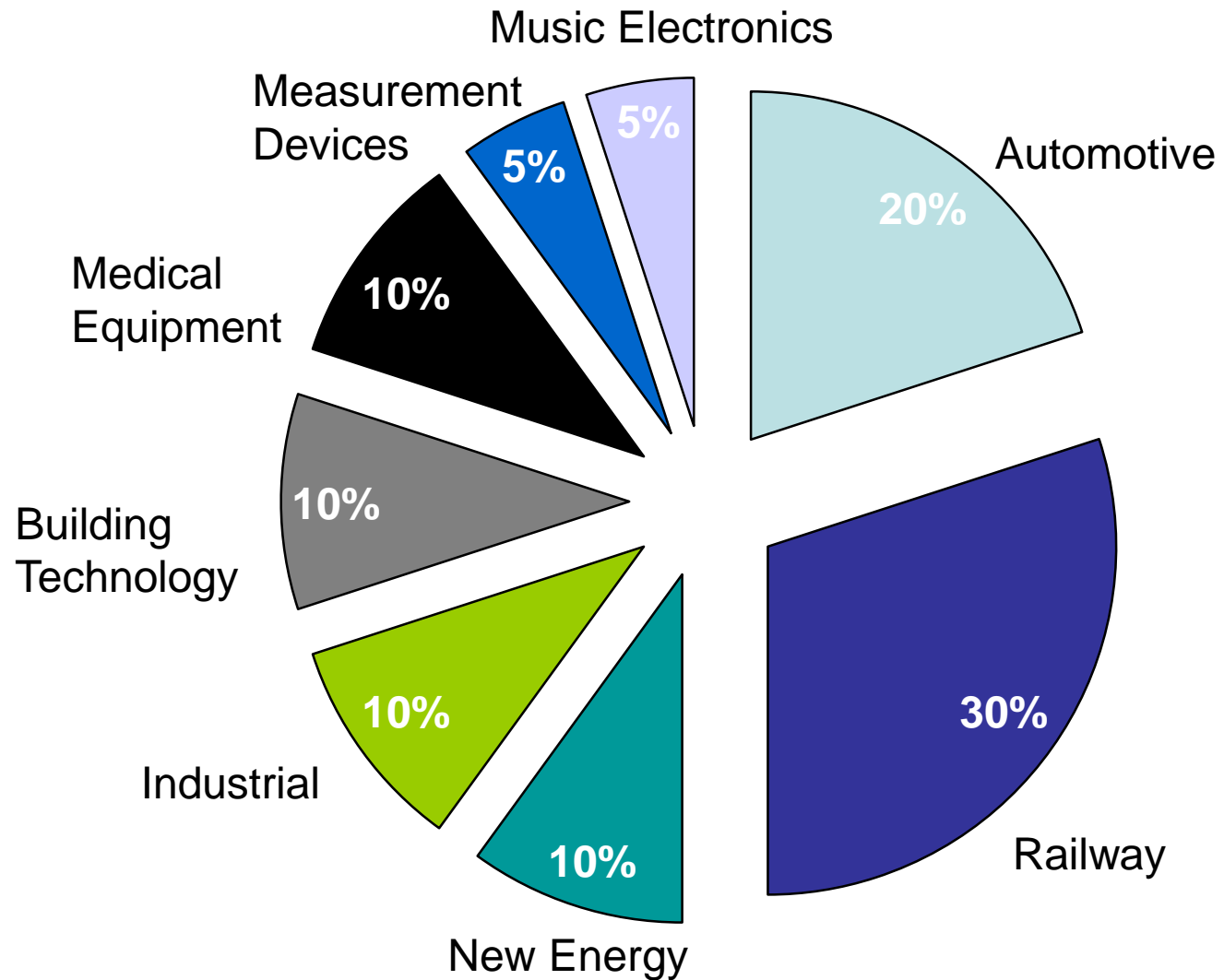


BEK Systemtechnik

Shareholders









BEK Systemtechnik

Our Competences

- Manual and automatic assembly of electronic components
- Complete production of assemblies in through-hole, mixed and SMD technology with machine soldering in a reflow continuous furnace or on a double wave soldering machine
- Press-in of contact pins and connector strips
- Painting of electronic assemblies
- Assembly of complete devices
- Optical inspection and electrical testing of components and complete devices
- Burn-in tests, temperature change tests in our climate chambers
- Procurement of components and provision of printed circuit boards on customer request
- Layout creation according to your circuit diagram
- Sample assembly, individual production, series production
- Inter Circuit Programming Service
- Stable and reliable supply chain, logistics
- Environmental Protection and Packaging Recycling



General

- maximum circuit board dimensions: 450 x 400 mm (larger dimensions are possible by agreement)
- fully automatic equipping
- short processing times in production and testing
- all workstations are ESD-protected
- universally applicable means of transport for the production flow
- customized packaging

Component Preparation

- Preparation of all commercial components for manual assembly with devices and tools
- automatic devices for beading, cutting and bending axial and radial taped components
- mechanical devices for preparing bulk material or special types of components

Manual Assembly

- Universal assembly workstations and repair workstations for sample assemblies and small series
- Placement and assembly workstations on the conveyor belt (linked with double wave soldering machine) for series production

Programmable circuit types:

- microcontrollers, memory, logic devices, crystals

Testing:

- Continuity Check
- Check Sum
- Blank Check, Device Check
- Misinsertion
- Compare Check
- Function Test
- Backward Device

Advantages at a glance:

- Cost-effective
- Fully automatic
- Laser marking
- Much faster than by hand
- Minimized handling errors
- Components, logistics and support - all from one source



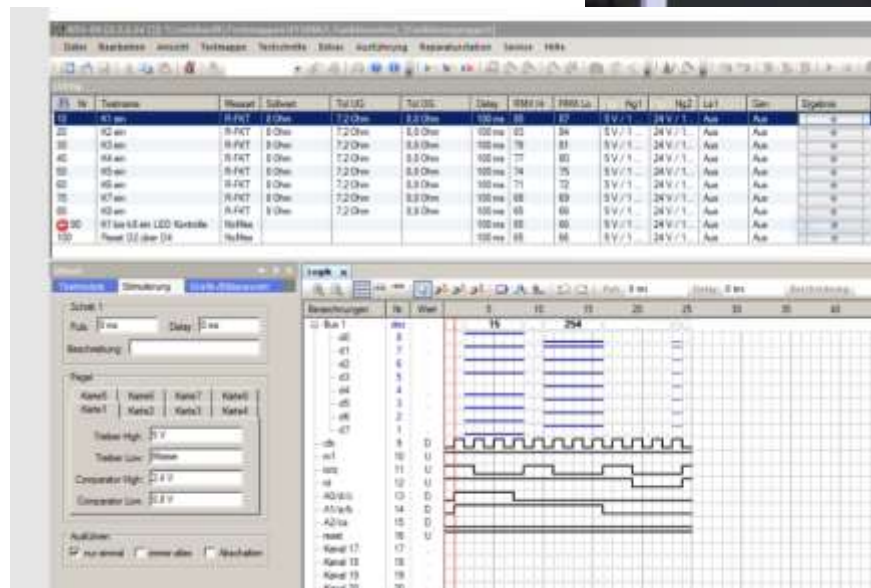
- Placement in adhesive or solder paste, interlinking with full convection oven
- Screen printing placement in solder paste, interlinking with full convection oven
- spectrum of components:
 - rectangular chips 0201 to 2225
 - melf, minimelf
 - SOT 23, SOT 89
 - QFP up to 0.4 pitch
 - BGA, μ BGA
 - Special designs
- smallest mountable package 01005 QFP, QFN, BGA, μ BGA from 0,4mm pitch
- automatic bad PCB detection
- optical correction system
- Boardloader and in-line transport chaining
- Maximum circuit board size for SMD assembly 905 * 590 mm



- Wave soldering machine for SMD and through-hole technology (lead-free and leaded)
- Options:
 - Inclined transport
 - Spray fluxer Density measuring
 - correction system
- Full convection reflow soldering machine
- 100% N2 use for machine soldering

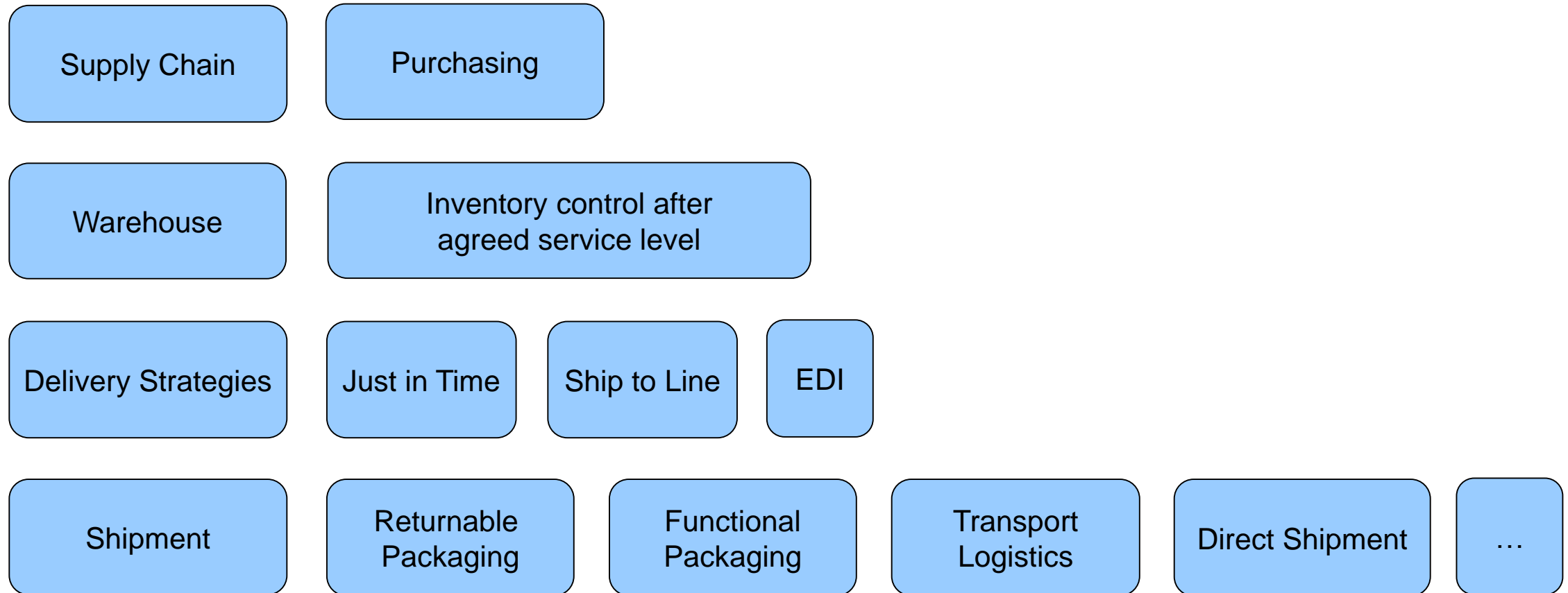


- Visual inspection with automatic optical inspection (Orbotech) + Quins Easy
- Manual inspection with Vision "Mantis" PCB inspection device
- In-Circuit-Test with Reinhardt Multifunctiontest-system ATS-KMFT-670M-2
- Function Testing with Reinhardt Multifunctiontest-system ATS-KMFT-670M-2



- Burn-in tests
- Thermal shock tests
- Active and passive













- Reliable partner for EMS services of our customers
- Competent advice
- Stable supply chain
- Unconditional quality
- High delivery reliability and ability to meet delivery dates
- Flexible and competent service
- Aftersales support



BEK Systemtechnik

Your Contact

BEK Systemtechnik

Bürknersfelder Str. 5b

13053 Berlin



+49 30 98190222

+49 30 97999788



BEK@Rutronik.de



visit our homepage

www.BEK-Systemtechnik.de